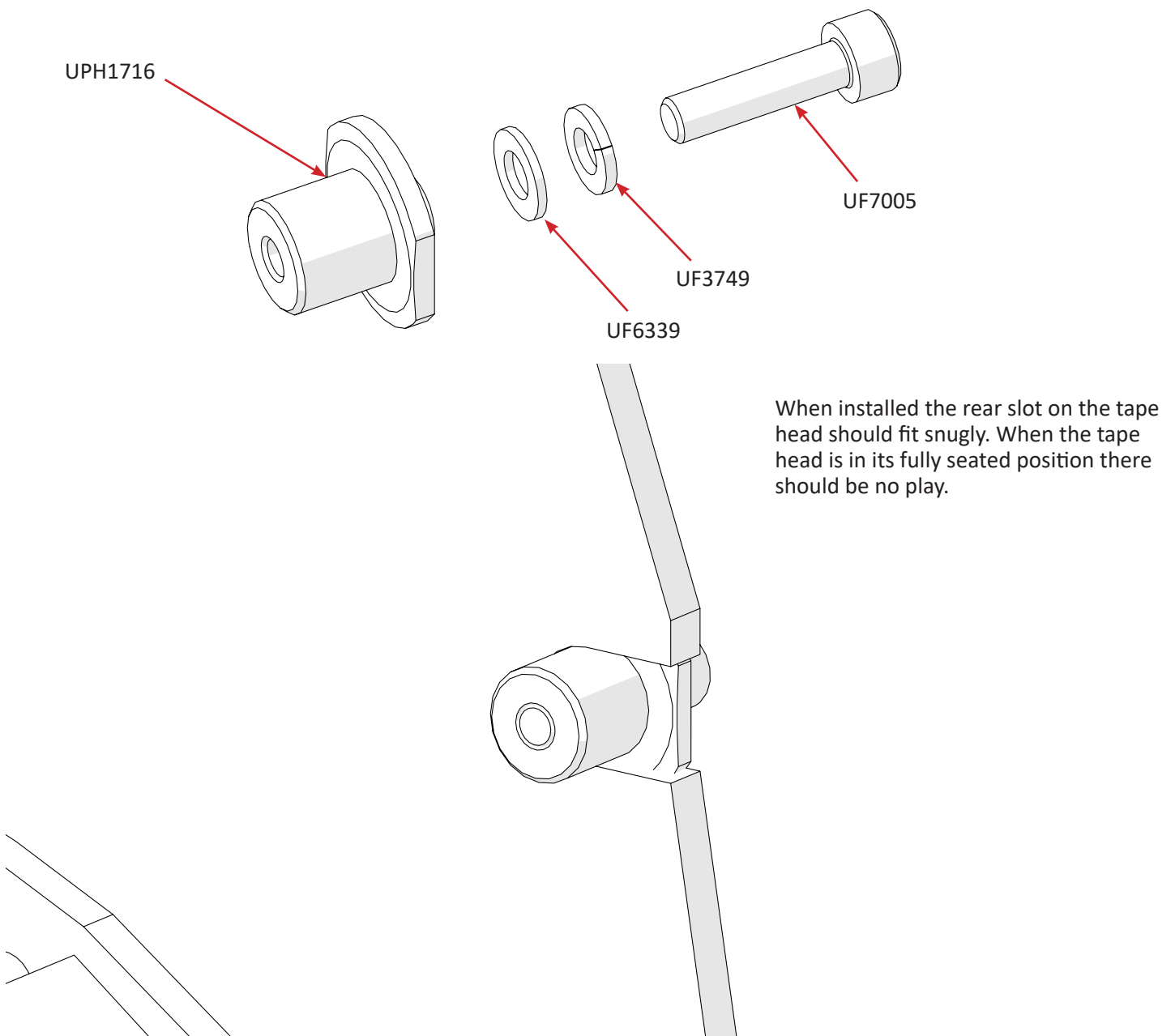


## Mounting pins for ETX LD (UH232TW & UH432TW)

The mounting pins in ECN1164 are to solve the problem of the ETX LD heads being worn away from vibrations on the mounting points when installed into competitive Loveshaw Little David machines.

To install the top mounting points:

1. Remove the existing top rear mounting pins on the Loveshaw machine.
2. Fit the new top adapter (UPH1716) into the old mounting hole from the tape head side.
3. Using a SHCS M4-0.7 x 14mm (UF7005) slip it through a Lock Washer (UF3749) then Flat Washer (UF6339) before securing it to the new top adapter.
4. Repeat for the other side.

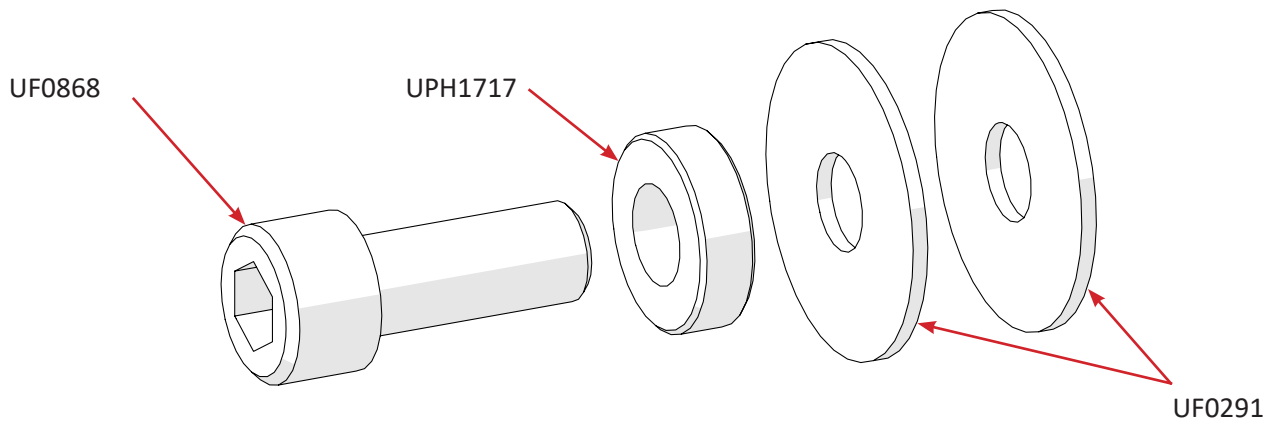


## Mounting pins for ETX LD (UH232TW & UH432TW)

The mounting pins in ECN1164 are to solve the problem of the ETX LD heads being worn away from vibrations on the mounting points when installed into competitive Loveshaw Little David machines.

To install the Bottom mounting points:

1. Remove the existing bottom mounting pins on the Loveshaw machine.
2. Using a SHCS M10-1.5 x 25mm (UF0868) slip it through the bottom bushing (UPH1717) then two Flat Washers (UF0291).
3. The M10 screw should install directly into the existing mounting point on the Loveshaw machine.
4. Repeat for the other three mounting locations.



When the new pins are installed the tape head should drop in as normal with the front (leading end) resting on the bottom bushing and the rear of the tape head drops into place. This should be a tight snug fit with no play.

